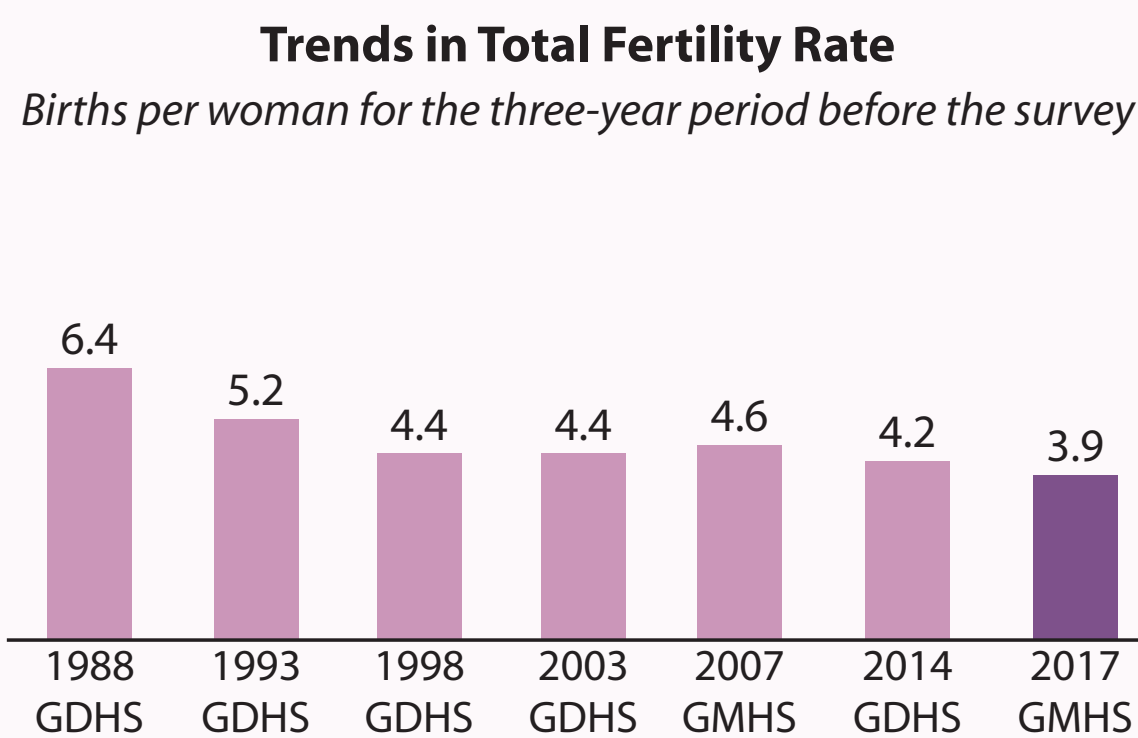


GHANA

2017 Ghana Maternal Health Survey

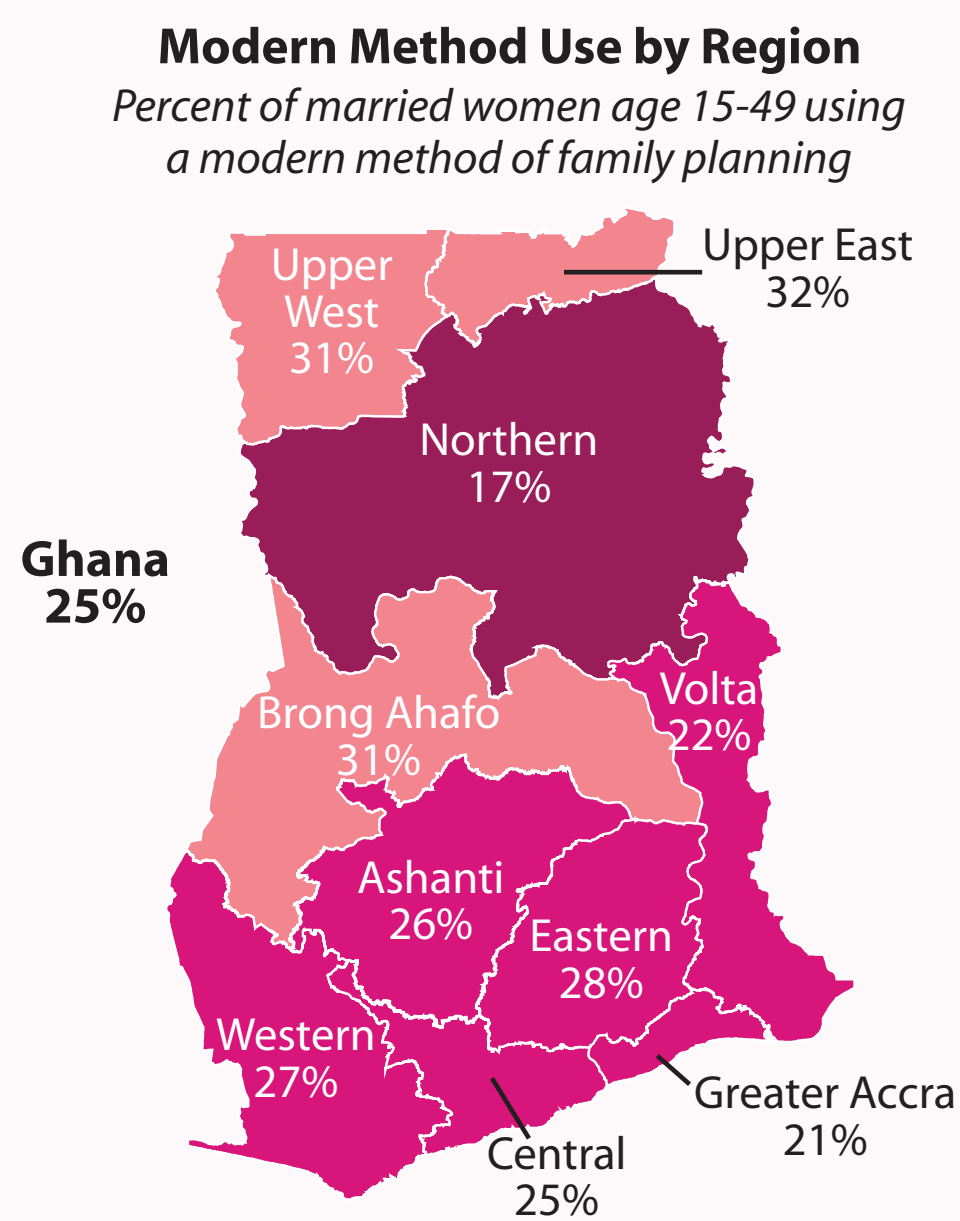
Fertility

Women in Ghana have an average of 3.9 children. Fertility has declined from 6.4 children per woman in 1988.



Family Planning

1 in 4 married women use a modern method of family planning. Use of modern family planning methods ranges from a low of 17% in Northern region to a high of 32% in Upper East region.

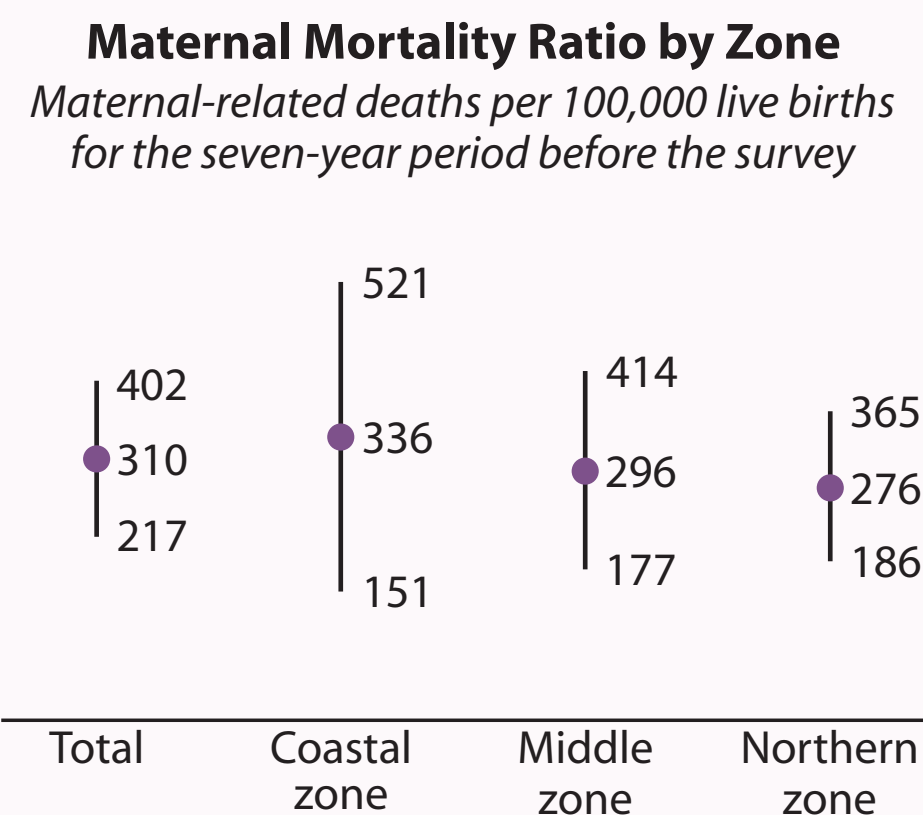
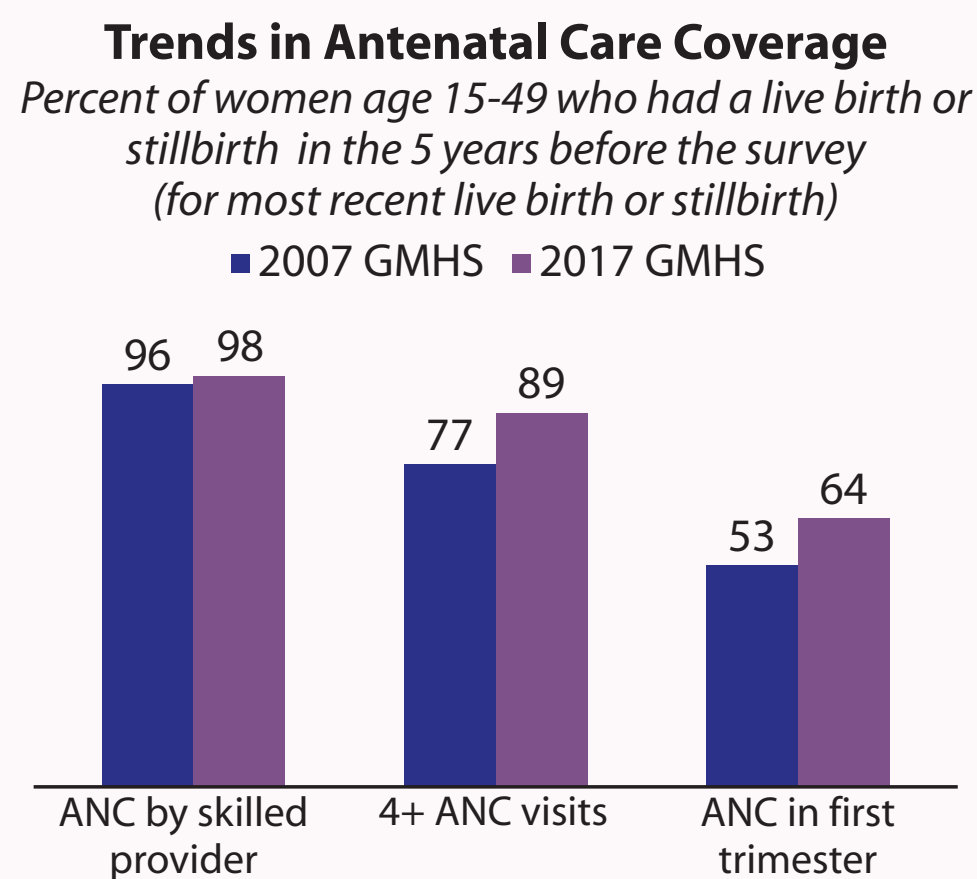


Maternal Mortality

The maternal mortality ratio (MMR) is 310 deaths per 100,000 live births for the 7-year period before the survey. The confidence interval ranges from 217 to 402 deaths per 100,000 live births. The differences in the zonal MMR point estimates are negligible.

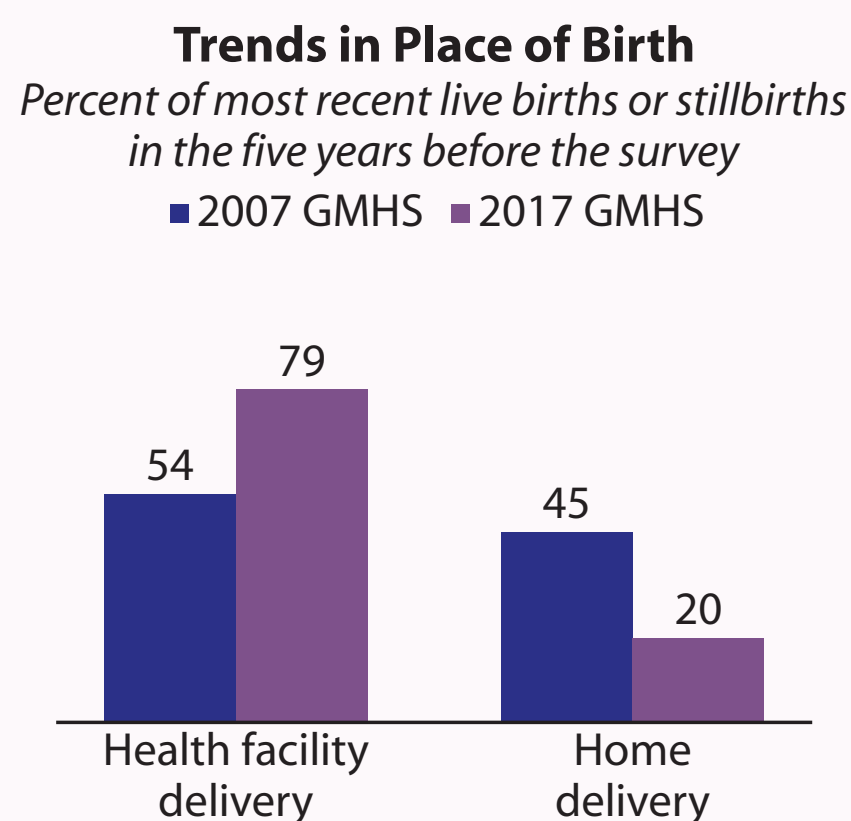
Antenatal Care

Since 2007, more women in Ghana are receiving antenatal care (ANC) from a skilled provider, making 4+ ANC visits, and attending ANC in their first trimester.



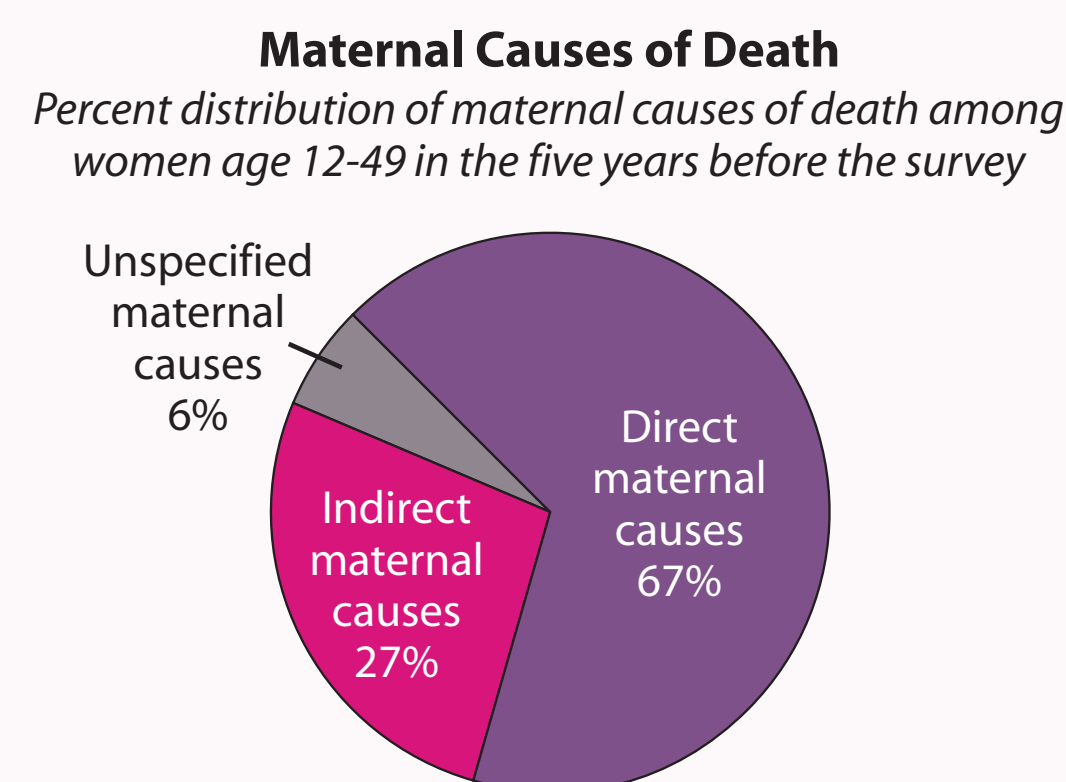
Delivery Care

79% of live births or stillbirths are delivered in a health facility, while 1 in 5 births or stillbirths are delivered at home. Health facility deliveries have markedly improved from 54% in 2007 to 79% in 2017.



Maternal Causes of Death

Overall, 1 in 7 deaths to women age 12-49 in the past 5 years are due to maternal causes. Two-thirds of maternal deaths are due to direct maternal causes. More than 1 in 4 deaths are due to indirect maternal causes (non-obstetric complications), and 6% are due to unspecified maternal causes.



© 2016 Sarah Hoibak/VectorWorks, Courtesy of Photoshare

